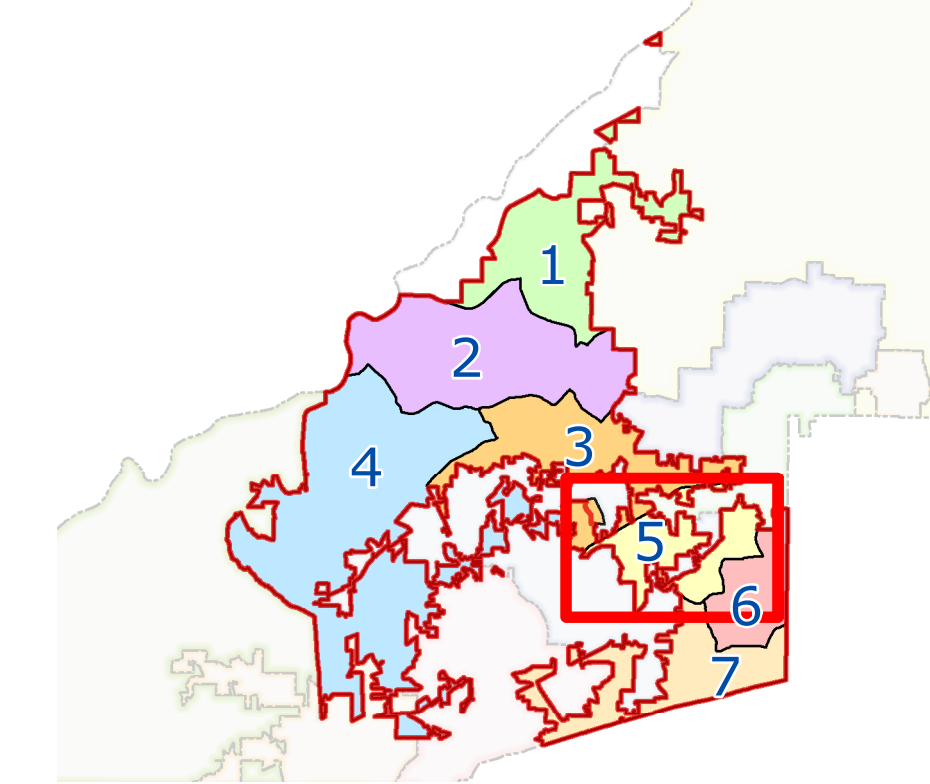


South Fulton Council District 5



- | | | |
|--|---|--|
| <p>Public Schools</p> <ul style="list-style-type: none"> Elementary School Middle School High School <p>County Facilities</p> <ul style="list-style-type: none"> Library Health Center Arts & Culture Other Facilities | <p>Landmarks</p> <ul style="list-style-type: none"> College/University Golf course Hospital Primary/Secondary school Shopping center <p>Transit</p> <ul style="list-style-type: none"> MARTA Station MARTA Line | <p>Parks</p> <ul style="list-style-type: none"> Community Park Conservation County Park Forest Garden Greenway Historical Site Municipal Park Recreational Facility Regional Park Other |
|--|---|--|



Disclaimer: While all reasonable care has been taken to ensure the information contained on this map is up to date and accurate, the City of South Fulton does not guarantee the information to be free from error or omission. The information contained on this map should be used for reference purposes only.