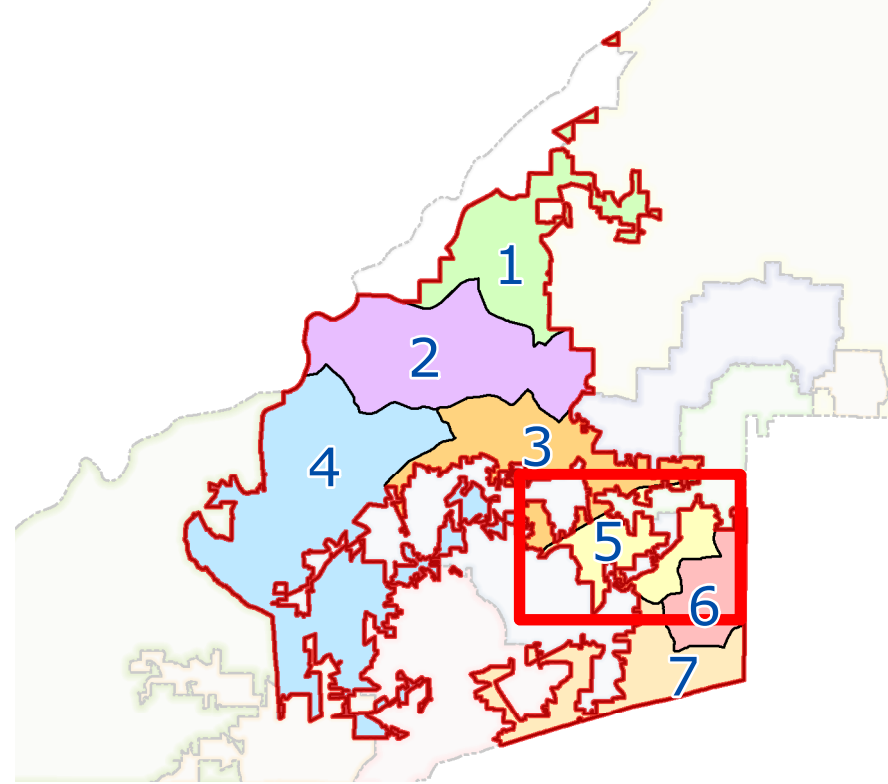


# South Fulton Council District 5



- |  |   |  |
|--|---|--|
| <p><b>Public Schools</b></p> <ul style="list-style-type: none"> <li> Elementary School</li> <li> Middle School</li> <li> High School</li> </ul> <p><b>County Facilities</b></p> <ul style="list-style-type: none"> <li> Library</li> <li> Health Center</li> <li> Arts &amp; Culture</li> <li> Other Facilities</li> </ul> | <p><b>Landmarks</b></p> <ul style="list-style-type: none"> <li> College/University</li> <li> Golf course</li> <li> Hospital</li> <li> Primary/Secondary school</li> <li> Shopping center</li> </ul> <p><b>Transit</b></p> <ul style="list-style-type: none"> <li> MARTA Station</li> <li> MARTA Line</li> </ul> | <p><b>Parks</b></p> <ul style="list-style-type: none"> <li> Community Park</li> <li> Conservation</li> <li> County Park</li> <li> Forest</li> <li> Greenway</li> <li> Garden</li> <li> Historical Site</li> <li> Municipal Park</li> <li> Recreational Facility</li> <li> Regional Park</li> <li> Other</li> </ul> |
|--|---|--|



Disclaimer: While all reasonable care has been taken to ensure the information contained on this map is up to date and accurate, the City of South Fulton does not guarantee the information to be free from error or omission. The information contained on this map should be used for reference purposes only.

Date: 7/19/2017 Created By: SY